

AIR TANKS

DESIGNED AND BUILT BY THE AIR RESERVOIR SPECIALISTS



A TRAMEC COMPANY



Also Available In Aluminum

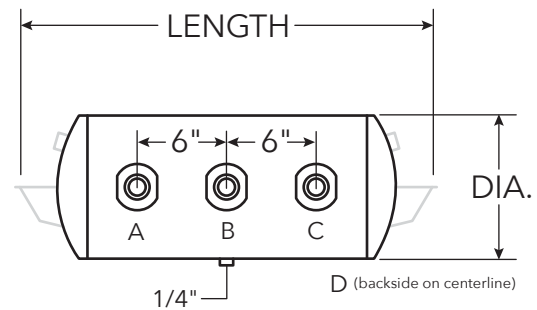
High-Quality Steel Tanks are Coated Inside and Out!

BUILT WITH SUPERIOR CORROSION RESISTANCE

Tramec air tanks are designed to meet and exceed SAE J10 and FMVSS121 requirements, and exceed the rigorous coating requirements set by leading truck OEMs.

- Proudly **MADE IN THE USA** at our facility in Ohio!
- Available in high-quality steel and aluminum
- Passes ASTM B117 Corrosion Test Protocol
- Pair with a Tramec Sloan drain valve for years of smooth, trouble-free operation, minimizing downtime and maintenance costs

Most tanks come with one of four bracket and end port configurations, as seen here:



P/N	REF P/N	DIA.	CAPACITY	LENGTH	END PORTS	END STYLE	MAIN PORT A	MAIN PORT B	MAIN PORT C	MAIN PORT D	MATERIAL
TSJ8035	461006	8"	1410 in ³	29.5"	1/2"	•	–	3/4"	–	–	Coated Steel
TSJ8000	461007	8"	1410 in ³	32"	3/8"	1	–	3/4"	–	–	Coated Steel
TSJ8001	–	8"	1410 in ³	32"	3/8"	4	–	3/4"	–	–	Coated Steel
TSJ8002	461027	8"	1460 in ³	33"	3/8"	2	–	3/4"	–	3/4"	Coated Steel
TSJ8007	–	8"	1410 in ³	32"	3/8"	4	–	3/4"	–	3/4"	Coated Steel
TSJ8014	–	8"	1410 in ³	32"	3/8"	2	–	3/4"	–	3/4"	Coated Steel
TSJ8016	461026	8"	1410 in ³	32"	3/8"	4	–	1/2"	–	1/2"	Coated Steel
TSJ8022	–	8"	1410 in ³	32"	3/8"	4	3/4"	–	3/4"	–	Coated Steel
TSJ8022A	–	8"	1395 in ³	32"	3/8"	4	3/4"	–	3/4"	–	Aluminum

• Does not feature a standard end configuration

IMPORTANT: Refer to drawings on page 1

P/N	REF P/N	DIA.	CAPACITY	LENGTH	END PORTS	END STYLE	MAIN PORT A	MAIN PORT B	MAIN PORT C	MAIN PORT D	MATERIAL
TSJ8036	-	8"	1410 in ³	32"	3/8"	4	1/2"	1/2"	1/2"	1/2"	Coated Steel
TSJ8037	-	8"	1410 in ³	32"	3/8"	4	3/4"	-	3/4"	3/4"	Coated Steel
TSJ8047	461023	8"	1410 in ³	32"	3/8"	1	3/4"	-	3/4"	3/4"	Coated Steel
TSJ8052	-	8"	1410 in ³	32"	3/8"	1	-	3/4"	-	3/4"	Coated Steel
TSJ8068	-	8"	1410 in ³	32"	3/8"	2	3/4"	-	3/4"	-	Coated Steel
TSJ9500	461005	9.5"	1490 in ³	27.5"	3/8"	1	-	3/4"	-	-	Coated Steel
TSJ9501	461004	9.5"	1490 in ³	27.5"	3/8"	2	-	3/4"	-	-	Coated Steel
TSJ9505	-	9.5"	1490 in ³	27.5"	3/8"	4	-	3/4"	-	1/2"	Coated Steel
TSJ9505A	-	9.5"	1480 in ³	27.5"	3/8"	4	-	3/4"	-	1/2"	Aluminum
TSJ9506	461040	9.5"	1490 in ³	27.5"	1/2"	3	-	1/2"	-	1/2"	Coated Steel
TSJ9507	-	9.5"	1490 in ³	27.5"	1/2"	2	3/4"	-	3/4"	-	Coated Steel
TSJ9508	461003	9.5"	1490 in ³	27.5"	3/8"	1	-	3/4"	-	3/4"	Coated Steel
TSJ9510	-	9.5"	1490 in ³	27.5"	3/8"	4	-	3/4"	-	-	Coated Steel
TSJ95116	-	9.5"	1490 in ³	27.5"	1/2"	4	3/4"	-	3/4"	-	Coated Steel
TSJ95118	461000	9.5"	1490 in ³	27.5"	3/8"	1	-	3/4"	-	1/2"	Coated Steel
TSJ95119	-	9.5"	1490 in ³	27.5"	3/8"	2	3/4"	-	3/4"	-	Coated Steel
TSJ9514	-	9.5"	1490 in ³	27.5"	1/2"	4	-	1/2"	-	-	Coated Steel
TSJ95149	-	9.5"	1490 in ³	27.5"	3/8"	4	3/4"	-	3/4"	-	Coated Steel
TSJ9515	461029	9.5"	1490 in ³	27.5"	3/8"	1	-	1/2"	-	1/2"	Coated Steel
TSJ9515A	-	9.5"	1480 in ³	27.5"	3/8"	1	-	1/2"	-	1/2"	Aluminum
TSJ95156	461002	9.5"	1490 in ³	27.5"	3/8"	1	3/4"	-	3/4"	-	Coated Steel
TSJ95161	-	9.5"	1490 in ³	27.5"	3/8"	1	3/4"	-	3/4"	3/4"	Coated Steel
TSJ95162	-	9.5"	1490 in ³	27.5"	3/8"	4	3/4"	-	3/4"	3/4"	Coated Steel
TSJ95165	-	9.5"	1635 in ³	29.5"	3/8"	2	3/4"	-	3/4"	1/2"	Coated Steel
TSJ95171	-	9.5"	1490 in ³	27.5"	3/8"	1	3/4"	-	3/4"	-	Coated Steel
TSJ9518	461018	9.5"	1490 in ³	27.5"	1/2"	1	-	3/4"	-	-	Coated Steel
TSJ9522	-	9.5"	1490 in ³	27.5"	1/2"	1	-	1/2"	-	1/2"	Coated Steel
TSJ9523	461001	9.5"	1490 in ³	27.5"	3/8"	1	-	1/2"	-	-	Coated Steel
TSJ95256	-	9.5"	1490 in ³	27.5"	3/8"	1	1/2"	1/2"	1/2"	1/2"	Coated Steel
TSJ9526	-	9.5"	1490 in ³	27.5"	3/8"	3	-	3/4"	-	3/4"	Coated Steel
TSJ95272	-	9.5"	1490 in ³	27.5"	3/8"	1	3/4"	3/4"	3/4"	3/4"	Coated Steel
TSJ9528	-	9.5"	1490 in ³	27.5"	3/8"	4	-	3/4"	-	3/4"	Coated Steel
TSJ9531	461025	9.5"	1490 in ³	27.5"	1/2"	4	-	1/2"	-	1/2"	Coated Steel
TSJ9534	-	9.5"	1490 in ³	27.5"	3/8"	2	-	3/4"	-	3/4"	Coated Steel
TSJ9534A	-	9.5"	1480 in ³	27.5"	3/8"	2	-	3/4"	-	3/4"	Aluminum
TSJ95354	-	9.5"	2525 in ³	42"	3/8"	2	3/4"	-	3/4"	3/4"	Coated Steel
TSJ95356	-	9.5"	1490 in ³	27.5"	3/8"	2	3/4"	-	3/4"	3/4"	Coated Steel
TSJ9537	-	9.5"	1490 in ³	27.5"	1/2"	2	-	3/4"	-	3/4"	Coated Steel
TSJ9542	461033	9.5"	1490 in ³	27.5"	3/8"	1	1/2"	-	1/2"	-	Coated Steel
TSJ9547	-	9.5"	1490 in ³	27.5"	1/2"	4	-	3/4"	-	3/4"	Coated Steel
TSJ9553	461050	9.5"	1490 in ³	27.5"	3/8"	2	3/4"	-	3/4"	3/4"	Coated Steel
TSJ9561	-	9.5"	1490 in ³	27.5"	3/8"	3	-	3/4"	-	-	Coated Steel
TSJ9575	-	9.5"	1490 in ³	27.5"	3/8"	3	-	1/2"	-	1/2"	Coated Steel

IMPORTANT: Refer to drawings on page 1

P/N	REF P/N	DIA.	CAPACITY	LENGTH	END PORTS	END STYLE	MAIN PORT A	MAIN PORT B	MAIN PORT C	MAIN PORT D	MATERIAL
TSJ9577	461019	9.5"	1490 in ³	27.5"	3/8"	2	-	1/2"	-	1/2"	Coated Steel
TSJ9579	461034	9.5"	1490 in ³	27.5"	3/8"	3	-	3/4"	-	1/2"	Coated Steel
TSJ9581	461037	9.5"	1490 in ³	27.5"	3/8"	4	3/4"	3/4"	3/4"	3/4"	Coated Steel
TSJ9585	-	9.5"	1490 in ³	27.5"	3/8"	3	3/4"	-	3/4"	3/4"	Coated Steel
TSJ9585A	-	9.5"	1480 in ³	27.5"	3/8"	3	3/4"	-	3/4"	3/4"	Aluminum
TSJ9587	-	9.5"	1490 in ³	27.5"	3/8"	2	1/2"	-	1/2"	-	Coated Steel
TSJ9590	-	9.5"	1490 in ³	27.5"	1/2"	4	3/4"	-	3/4"	3/4"	Coated Steel
TSJ9598	-	9.5"	1810 in ³	32"	3/8"	4	-	3/4"	-	-	Coated Steel
TSJ95335	461045	9.5"	2170 in ³	32"	1/2"	•	1/2"	1/2"	1/2"	-	Coated Steel
TSJ1200	461010	12"	2820 in ³	29.5"	3/8"	1	-	3/4"	-	-	Coated Steel
TSJ1203A	-	12"	2790 in ³	29.5"	3/8"	4	3/4" †	-	3/4" †	-	Aluminum
TSJ1204	-	12"	2820 in ³	29.5"	1/2"	1	-	3/4"	-	3/4"	Coated Steel
TSJ1205	461009	12"	2820 in ³	29.5"	3/8"	1	-	3/4"	-	3/4"	Coated Steel
TSJ1205A	-	12"	2790 in ³	29.5"	3/8"	1	-	3/4"	-	3/4"	Aluminum
TSJ1207	-	12"	2820 in ³	29.5"	1/2"	4	3/4"	-	3/4"	-	Coated Steel
TSJ1209	-	12"	2820 in ³	29.5"	3/8"	1	3/4"	3/4"	3/4"	3/4"	Coated Steel
TSJ12100	461017	12"	2820 in ³	29.5"	3/8"	2	-	3/4"	-	1/2"	Coated Steel
TSJ12100A	-	12"	2790 in ³	29.5"	3/8"	2	-	3/4"	-	1/2"	Aluminum
TSJ12105	-	12"	2820 in ³	29.5"	3/8"	4	1/2"	-	3/4"	3/4"	Coated Steel
TSJ12106	-	12"	2932 in ³	30.5"	3/8"	1	3/4"	-	3/4"	3/4"	Coated Steel
TSJ12107	-	12"	2596 in ³	27.5"	3/8"	1	3/4"	-	3/4"	3/4"	Coated Steel
TSJ1211	461016	12"	2820 in ³	29.5"	3/8"	2	-	3/4"	-	-	Coated Steel
TSJ1214	-	12"	2820 in ³	29.5"	3/8"	4	-	3/4"	-	-	Coated Steel
TSJ12146	-	12"	2820 in ³	29.5"	3/8"	3	3/4"	3/4"	3/4"	-	Coated Steel
TSJ12149**	-	12"	2820 in ³	29.5"	3/8"	1	3/4"	3/4"	3/4"	3/4"	Coated Steel
TSJ1216	461024	12"	2820 in ³	29.5"	3/8"	4	-	1/2"	-	1/2"	Coated Steel
TSJ1217	-	12"	2820 in ³	29.5"	3/8"	4	3/4"	-	3/4"	-	Coated Steel
TSJ1219	461046	12"	2820 in ³	29.5"	3/8"	1	3/4"	-	3/4"	3/4"	Coated Steel
TSJ12208	-	12"	2820 in ³	29.5"	3/8"	3	3/4"	3/4"	3/4"	3/4"	Coated Steel
TSJ12210A	-	12"	2790 in ³	29.5"	3/8"	2	-	3/4"	-	3/4"	Aluminum
TSJ12211	-	12"	2820 in ³	29.5"	3/8"	2	3/4"	-	3/4"	3/4"	Coated Steel
TSJ1223	-	12"	2820 in ³	29.5"	3/8"	2	-	1/2"	-	-	Coated Steel
TSJ1229	461008	12"	2820 in ³	29.5"	3/8"	1	3/4"	-	3/4"	-	Coated Steel
TSJ1230	-	12"	2820 in ³	29.5"	1/2"	2	3/4"	-	3/4"	3/4"	Coated Steel
TSJ1231	461022	12"	2820 in ³	29.5"	3/8"	2	3/4"	-	3/4"	3/4"	Coated Steel
TSJ1235	-	12"	2820 in ³	29.5"	1/2"	2	-	3/4"	-	3/4"	Coated Steel
TSJ1239	-	12"	2820 in ³	29.5"	1/2"	1	3/4"	-	3/4"	3/4"	Coated Steel
TSJ1242	461035	12"	2820 in ³	29.5"	3/8"	2	-	3/4"	-	3/4"	Coated Steel
TSJ1242A	-	12"	2790 in ³	29.5"	3/8"	2	-	3/4"	-	3/4"	Aluminum
TSJ1243	-	12"	2820 in ³	29.5"	3/8"	4	-	1/2"	-	3/4"	Coated Steel
TSJ1247	-	12"	2820 in ³	29.5"	3/8"	4	1/2"	-	1/2"	1/2"	Coated Steel
TSJ1248	-	12"	2820 in ³	29.5"	3/8"	4	3/4"	3/4"	3/4"	3/4"	Coated Steel
TSJ1249	-	12"	2820 in ³	29.5"	3/8"	2	3/4"	-	3/4"	-	Coated Steel

• Does not feature a standard end configuration

** Drain port located on the top and bottom

† Ports A and C are located on both sides of the air tank

AIR TANKS

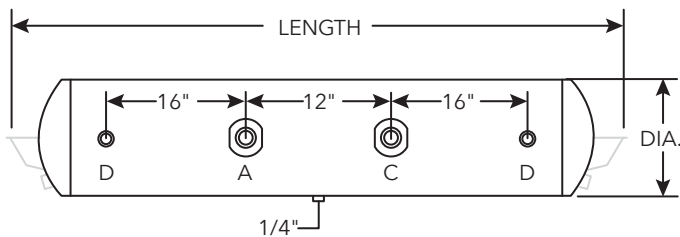
IMPORTANT: Refer to drawings on page 1

P/N	REF P/N	DIA.	CAPACITY	LENGTH	END PORTS	END STYLE	MAIN PORT A	MAIN PORT B	MAIN PORT C	MAIN PORT D	MATERIAL
TSJ1253	-	12"	2820 in ³	29.5"	3/8"	3	3/4"	-	3/4"	3/4"	Coated Steel
TSJ1254	-	12"	2820 in ³	29.5"	3/8"	4	3/4"	-	3/4"	3/4"	Coated Steel
TSJ1254A	-	12"	2790 in ³	29.5"	3/8"	4	3/4"	-	3/4"	3/4"	Aluminum
TSJ1255	-	12"	2820 in ³	29.5"	3/8"	4	1/2"	1/2"	1/2"	1/2"	Coated Steel
TSJ1270	-	12"	2820 in ³	29.5"	3/8"	4	-	3/4"	-	3/4"	Coated Steel
TSJ1273	-	12"	2820 in ³	29.5"	3/8"	1	-	1/2"	-	1/2"	Coated Steel
TSJ1273A	-	12"	2790 in ³	29.5"	3/8"	1	-	1/2"	-	1/2"	Aluminum
TSJ1274	-	12"	2820 in ³	29.5"	3/8"	3	3/4"	-	3/4"	1/2"	Coated Steel
TSJ1276	-	12"	2820 in ³	29.5"	3/8"	4	3/4"	-	3/4"	3/4"	Coated Steel
TSJ1277	-	12"	2820 in ³	29.5"	3/8"	2	3/4"	-	3/4"	1/2"	Coated Steel
TSJ1279	-	12"	2820 in ³	29.5"	3/8"	3	-	3/4"	-	3/4"	Coated Steel
TSJ1280	-	12"	2820 in ³	29.5"	3/8"	2	1/2"	-	1/2"	1/2"	Coated Steel
TSJ1284	-	12"	3100 in ³	32"	3/8"	2	3/4"	-	3/4"	3/4"	Coated Steel
TSJ1292	-	12"	2820 in ³	29.5"	1/2"	2	3/4"	-	3/4"	-	Coated Steel
TSJ1294	-	12"	2820 in ³	29.5"	3/8"	2	3/4"	3/4"	3/4"	3/4"	Coated Steel
TSJ1297	-	12"	2820 in ³	29.5"	1/2"	3	-	3/4"	-	3/4"	Coated Steel
TSJ1269	-	12"	2820 in ³	32"	3/8"	1	-	1/2"	-	1/2"	Coated Steel
TSJ12111	-	12"	4370 in ³	43.37"	3/8"	2	3/4"	-	3/4"	-	Coated Steel

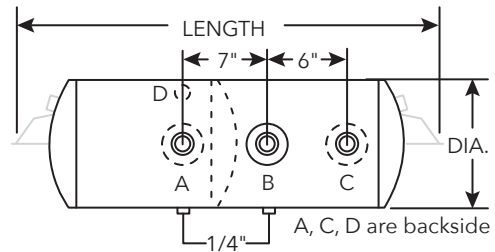
SPECIALTY TANKS

P/N	REF P/N	DIA.	CAPACITY	LENGTH	END PORTS	END STYLE	MAIN PORT A	MAIN PORT B	MAIN PORT C	SPECIALTY PORT(S) D	MATERIAL
TSJ95155	-	9.5"	2960 in ³	45.63"	3/8"	2	3/4"	-	3/4"	3/8"	Coated Steel
TSJ95250	-	9.5"	3005 in ³	46.25"	3/8"	2	3/4"	-	3/4"	3/8"	Coated Steel
TSJ9597	-	9.5"	3005 in ³	46.25"	3/8"	1	3/4"	-	3/4"	3/8"	Coated Steel
TSJ95239	-	9.5"	3025 in ³	49"	3/8"	1	3/4"	-	3/4"	†	Coated Steel
TSJ1221	461036	12"	2820 in ³	31.5"	1/2"	4	1/2"	1/2"	1/2"	3/8"	Coated Steel

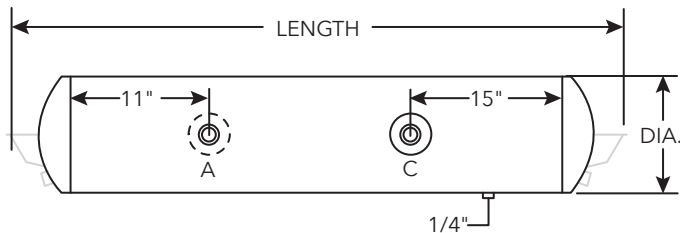
†Port C is located on both sides of the air tank



SPECIALTY TANKS: TSJ95155 | TSJ95250 | TSJ9597



SPECIALTY TANK: TSJ1221



SPECIALTY TANK: TSJ95239

Most tanks come with one of four bracket and end port configurations, as seen here:

