

**FLEET  
ENGINEERS®**

A TRAMEC COMPANY

**COMPOSITE & METAL FENDERS**



Spray Mate  
US Patent No.  
7,350,071  
Made in  
the USA



# SPRAY MASTER POLY FENDERS

**Spray Master Poly Fenders** are one of the most innovative spray suppression offerings available in the commercial vehicle market today. Durable, injection molded plastic polymers make them virtually indestructible.

- Available in Full Round, Single or Double Radius
- Injection molded plastic polymers optimize strength-to-weight ratios and exhibit extraordinary durability
- Variable geometries throughout the design of the fender and allows for the addition of unique product features and the optimization of material thickness in high stress areas
- Structural underside ribs and side valances provide superior spray suppression achievable through our injection modeling process
- Advanced mounting systems and accessories
- Lightweight, rust-free material increases cargo capacity, improving load-to-run efficiency
- SlideTrak models unique mounting system installs quickly and saves time when routine tire maintenance is required

## Full Round Poly Fender



### WATCH OUR VIDEO!

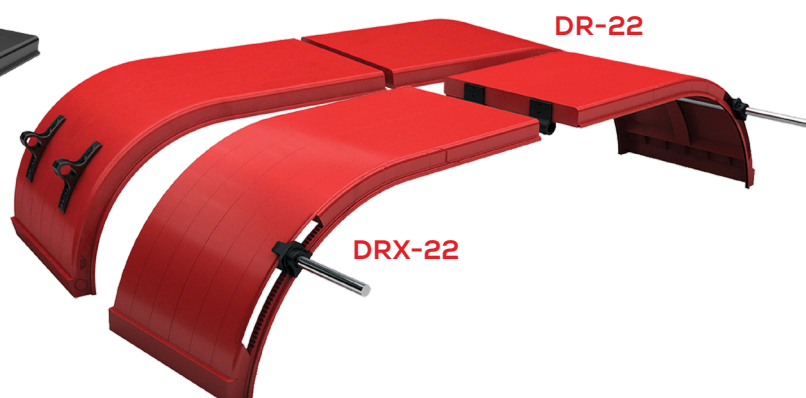
Visit our video page on [hd.tramec.com](http://hd.tramec.com) to learn more about EASY & FAST fender installation



## Single-Radius Poly Fender



## Double-Radius Poly Fender



Full Spray Control Coverage with Single Axle to Tandem  
Axle Options for 19.5" and 22.5"/24.5" Wheel Sizes

	FULL ROUND			SINGLE-RADIUS		DOUBLE-RADIUS	
MODEL NAME	FRX-19	FRX-22	FR-22	SRX-22	SR-22	DRX-22	DR-22
MOUNT STYLE	SlideTrax	SlideTrax	Traditional	SlideTrax	Traditional	SlideTrax	Traditional
END MOUNT POSITION	Top	Top	Top	Below	Top	Below	Top
END TUBES DIAMETER	1.375"	1.875"	1.875"	1.375"	1.875"	1.375"	1.875"
CENTER MOUNT TUBE DIAMETER	N/A	N/A	N/A	1.375" 1.875"	1.375" 1.875"	1.375" 1.875"	1.375" 1.875"
FITS WHEEL SIZE	19.5	22.5 / 24.5	22.5 / 24.5	22.5 / 24.5	22.5 / 24.5	22.5 / 24.5	22.5 / 24.5
STANDARD COLORS*	Black, Red, Gray	Black, Red, Gray	Black, Red, Gray, White*, Navy	Black, Red, Gray	Black, Red, Gray	Black, Red, Gray	Black, Red, Gray

\*May not apply to all models

Two mounting variations, each with their own unique features and benefits

More on next page >

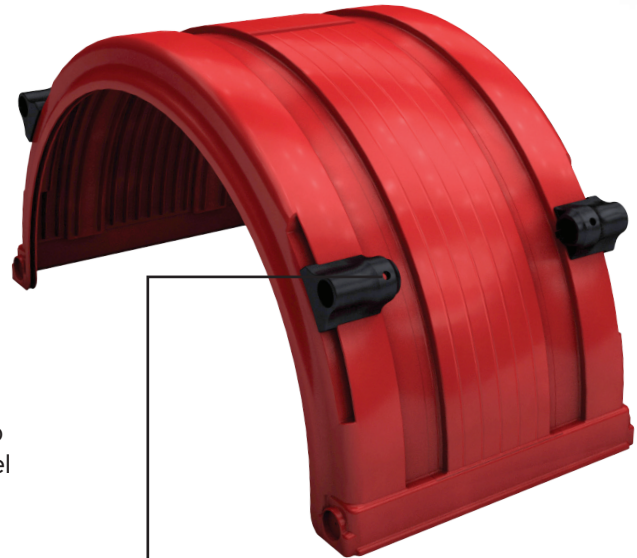


# When you choose a **SPRAY MASTER** you have two mount support options!

Fender installation is effortless with two options to choose from – each offering quick and easy fender removal and re-installation. Each mount support includes one set screw; tighten it to install your fenders, loosen it to remove them!

## **SlideTrax™** MOUNT SUPPORTS

- Faster, drill-free installation** – save money on installation and get on the road faster
- High impact composite clamps** adjust along a notched channel on both sides of the fender
- Adjustable Mounting Channel** for simple, mistake-proof alignment – simply slide the clamp into the desired mount location within the channel and lock it in place with a firm push



EASY TO INSTALL TIRE CHAINS, MAKE REPAIRS, OR PERFORM MAINTENANCE  
Simply loosen 4 set screws (1 on each support) and slide off the round post



## **STATIONARY** MOUNT SUPPORTS

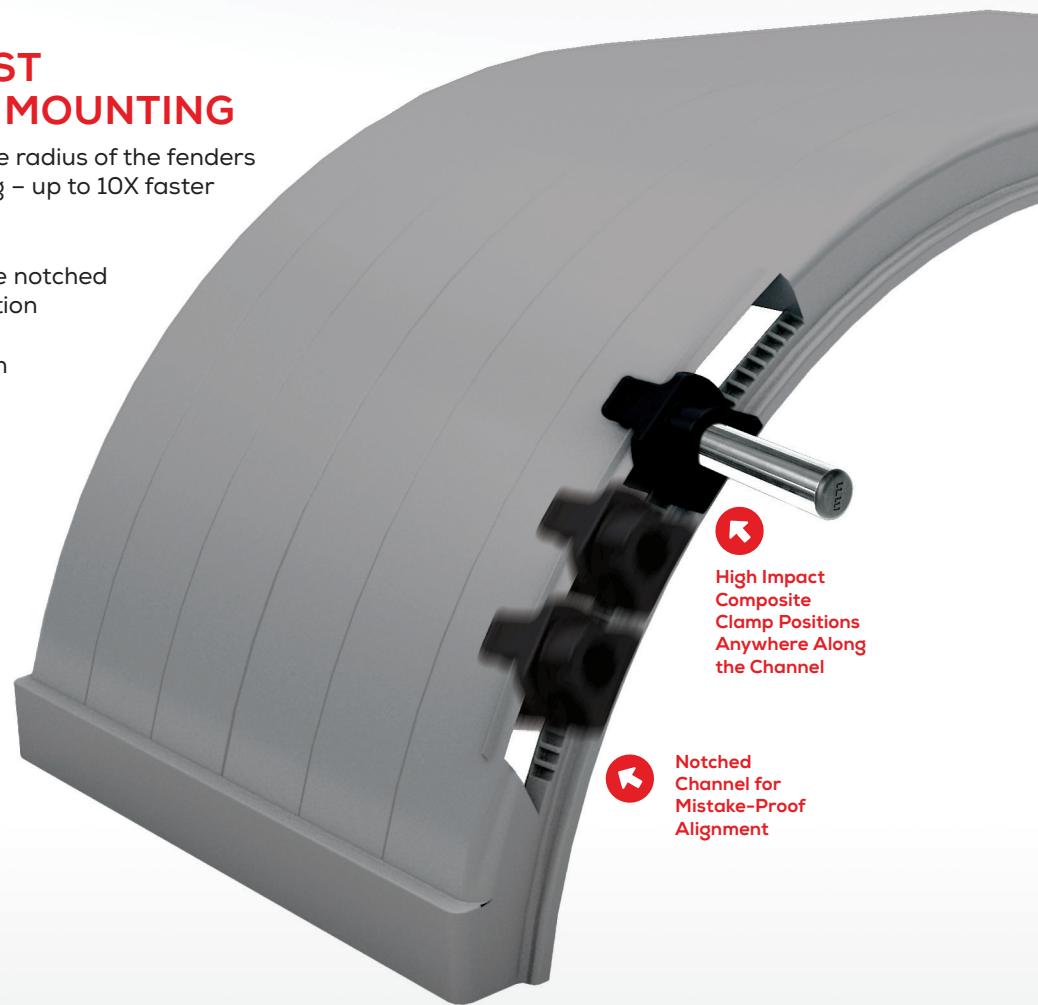
- Two-piece, injection-molded mount support** packaged separately from the fender
- Maximizes installation accuracy by allowing the installer to mount them in the **exact location** required
- Supports attach using a set of four bolts, nuts and washers for a **snug and secure fit**
- The bottom portion of the two-piece support fits within the molded ribs on the underside of the fender and **acts like a safeguard** to prevent the bolts pulling through the fender
- Top mounted piece** accepts the tube that attaches to the frame rail



## THE QUICKEST, MOST EFFICIENT FENDER MOUNTING

SlideTrax Clamp Channel covers the radius of the fenders for quick installation with no drilling – up to 10X faster depending on the fender model!

- 1** – Easily slide the clamp along the notched channel to desired mount location
- 2** – Lock into teeth with a firm push
- 3** – Insert t-nut, slide fender onto post and tighten set screw



High Impact  
Composite  
Clamp Positions  
Anywhere Along  
the Channel



Notched  
Channel for  
Mistake-Proof  
Alignment

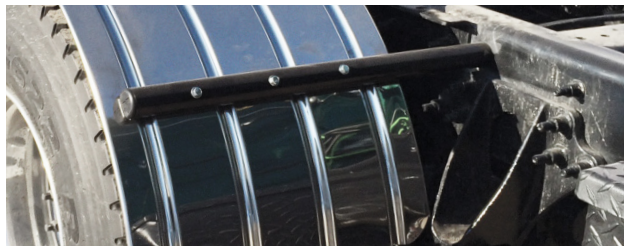
**CONTACT US TODAY TO LEARN MORE!**  
800.336.7778 | [HD.TRAMEC.COM](http://HD.TRAMEC.COM)

## SPRAY MASTER CLASSIC METAL FENDERS

Unquestionably, the top priorities in the trucking industry are performance and safety, and for over 60 years, we have met those priorities with the most reliable truck components on the market.

However, in an industry grounded in tradition and pride of ownership, customers are also on the lookout for options that differentiate them from competitors. Our Classic Metal fenders help truck owners and operators establish a signature style, offering unique designs and multiple specification options to reflect individual preferences.

- Superior protection against corrosion
- Rolled edges for added rigidity
- Radius ends to reduce cracking
- Sold in pairs or single fender
- MADE IN THE USA!



### **SUPERIOR SPRAY SUPPRESSION!**

Designed to provide superior spray suppression which not only keeps equipment cleaner, but helps prevent objects such as stones from damaging finish and breaking mirrors and windows



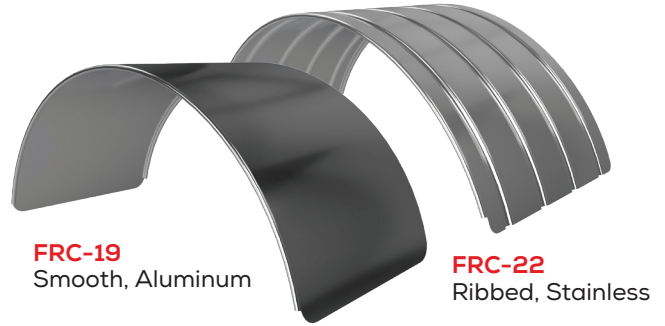
## Performance and Styling with Timeless Appeal.



## Full Round Fenders – FRC Series

Full Round fenders are design for single axles providing full protection to the truck and motorists from spray and road debris. Our FRC Series Fenders are available in:

- Smooth or Ribbed finish styles for use with 19.5 tire size or Ribbed finish style for use with 22.5/24.5 tire size
- Multiple metal styles providing classic elegance



## Single Radius Fender – SRC Series

Single-Radius or Half Tandem Fenders wrap around the tire on one side with a flat top providing moderate protection to the truck and motorists from road debris. Our SRC Series Fenders are available in:

- Smooth or Ribbed finish style for use with 22.5/24.5 tire size
- Lengths of 57", 77" and 112"
- Multiple metal styles providing classic elegance



## Double Radius Fender – DRC Series

Double-Radius or Full Tandem axle fenders cover more than one axle and offer a sleek, finished look with effective spray control protection from road debris. Our DRC Series Fenders are available in:

- Ribbed finish style for use with 22.5/24.5 tire size
- Lengths of 103" and 108"
- Multiple metal styles providing classic elegance

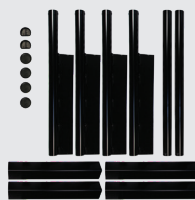


## DON'T FORGET YOUR MOUNTING HARDWARE

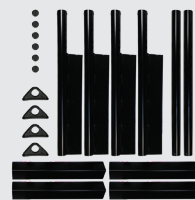
### QuickPicks Mounting Hardware

Our fenders are supported by the most extensive line of mounting hardware in the industry and are easy to specify with QuickPicks.

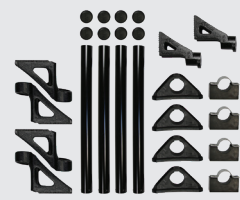
Simply select the kit that's right for your truck and we'll provide everything you need—right down to the nuts and bolts.



Economy



Standard



Premium

## QUARTER FENDER SOLUTIONS

Fleet Engineers has been designing and perfecting quarter fenders for over 40 years. Today, as a Division of Tramec Sloan, we offer one of the most extensive quarter fender lines in the market. From advanced aerodynamic designs to basic cross-tube designs, we are the leader in both metal and plastic quarter fenders.

- Radius Edges Reduce Road Spray and Enhance Aesthetics
- Aerodynamically Enhanced Versions for Optimal Performance
- Flattened Cross-Tube and Backing Plates Hold Up to Road Vibration with Secured Tightening
- Advanced Corrosion Resistance and Heavy Duty Performance with Stainless Steel Versions
- Standard and Low Mount Styles



**WATCH OUR VIDEO!**  
Compare the advantage of our Quarter Fenders. Visit our video page on [hd.tramec.com](http://hd.tramec.com) to check it out!



## Discover the Style & Performance with Three Styles for **Versatility & Optimal Spray Control.**



## **AeroSlipper™** Aerodynamic Design

Designed with a short support tube for superior aerodynamic performance, the reinforced support tube minimizes drag and also reduces the amount of dirt and debris that collect against the crossbar. AeroSlipper is the Fleet Manager's choice for efficient operation and clean appearance.



ASP-25  
Black\* Poly



ASC-24  
Stainless 18  
Gauge Steel



22.5" / 24.5"  
Wheel Size



ASP-25

## **XT-Series** Cross-Tube Mount Series

Full length fender mount solution with configuration options in both standard and low mount. Uniquely designed with a flattened Cross-Tube and backing plate to ensure a snug and secure fit to reduce road vibration.



XTP-24 / XTPL-24  
Black\* Poly



XTC-24 / XTCL-24  
Stainless 18  
Gauge Steel



22.5" / 24.5"  
Wheel Size



XTC-24

## **PM-Series** Paddle Mount Series

Desired for their attractive appearance and optimized functionality, our Paddle Mounts have a full length cosmetically designed triangle cross bar with hidden mounting bolts to create a clean uncluttered appearance.



PMC-24 / PMCL-24  
Stainless 18  
Gauge Steel



22.5" / 24.5"  
Wheel Size



PMC-24

\* Custom poly colors available upon request

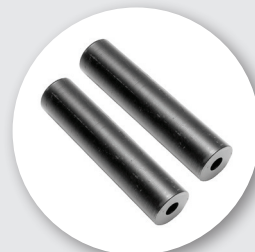
## DON'T FORGET YOUR MOUNTING HARDWARE

### **QuickPicks** Mounting Hardware

Every Fleet Engineers Quarter Fender is available with a complete set of mounting hardware, we call them "Quick Picks." Simply select Standard Side Mount Socket or Premium Cast Steel Post Mount Socket and get complete kits with every washer, nut, bolt and bar delivered to fit your fender, your vehicle.



**Standard**  
Side Mount Socket



**Premium**  
Cast Steel Post  
Mount Socket

## SPRAY MASTER REFUSE FENDERS

- Superior spray control keeping rain and debris off equipment
- Built to withstand the harshest road conditions, including extremely cold weather
- Made of long-lasting High Molecular Weight Polyethylene that is abrasion and UV resistant
- Textured to resist various types of damage such as scratches, gouges, wear, and other cosmetic flaws
- Lightweight, rust-free material increases cargo capacity, improving load-to-run efficiency

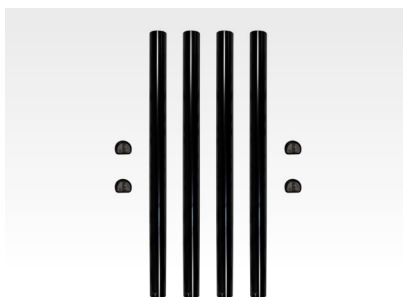


### QuickPicks

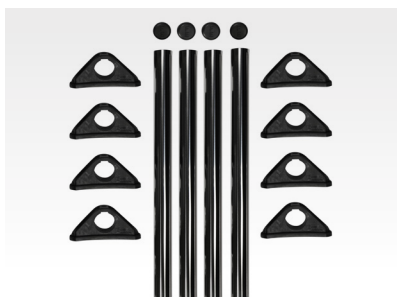
#### COMPLETE MOUNTING HARDWARE SETS FOR EASY INSTALLATION

Our mounting hardware **Quick Picks** are available for every fender in our extensive product line.

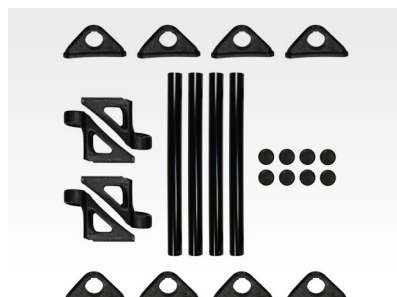
With **Quick Picks**, you simply choose between Economy, Standard, and Premium mounting kits. Every specific washer, nut, bolt, and tube for your fender comes complete and delivered in one box.



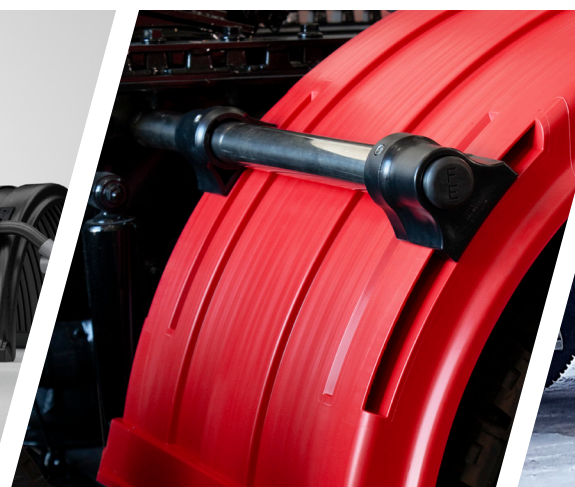
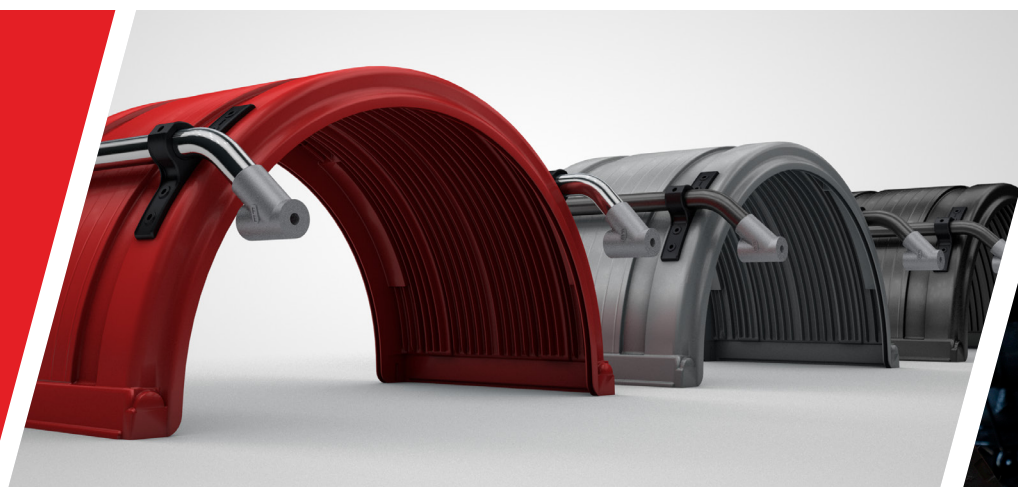
**Economy Quick Picks** are the basic kits that get the job done. They are often used when installers prefer simple, direct-to-frame attachment.



**Standard Quick Picks** are custom designed for every fender and have been fleet tested in hundreds of field applications.



**Premium Quick Picks** offer superior distinctions like stainless steel tubes, additional offsets, and greater adjustability.

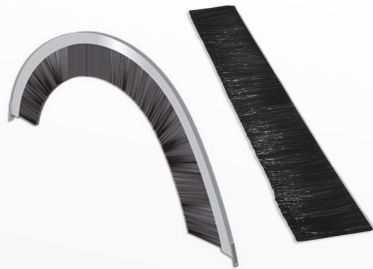


## FENDER ACCESSORIES...



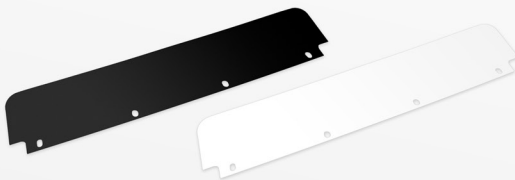
### DECORATIVE STAINLESS STEEL STRIPS

Dress up your Spray Master Full Round Fenders – FRX-22 or FR-22 models with stainless steel decorative strips. Easy to install and adds decorative flare to your vehicle. Hardware included.



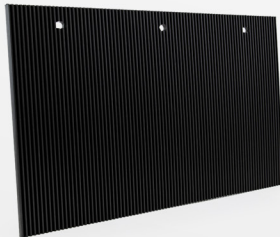
### SPRAY SUPPRESSION BRUSH

Add even more spray suppression to your fenders with optional brush kits. Black molded nylon along the edges of your fender significantly reduces spray and improves both driver and motorist visibility. Air flows through the flexible filament skirting and improved tab design makes installation easy.



### QUARTER FENDER TOP FLAPS

Top flaps provide maximum debris protection for your truck and for other drivers on the road. They help prevent rocks and ice from being thrown, and also reduce the amount of corrosive road chemicals that end up on your truck's underbody. Made of thick durable poly blend material, they will last in harsh road conditions. Plain and OEM Branded options



### MUDFLAP FOR FRX-19 FENDERS

20" x 12" black anti-spray mudflap gives the FRX-19 model added spray suppression to improve both driver and motorist visibility.



**FLEET ENGINEERS** has been designing and manufacturing products for the Heavy Duty vehicle industry for over 60 years. Fleet Engineers is part of the **Tramec** family along with Tramec Sloan and Penz Products.

We strive to provide quality products with great service at an exceptional value for our customers.

**CUSTOMER SERVICE:**

800.336.7778

customerservice@tramec.com

**ONLINE:**

hd.tramec.com

**ALSO FROM TRAMEC'S HD BRANDS:**

- Air Brake Products
- Electrical Products
- Fittings & Fasteners
- Door Systems
- Cargo Control
- Container Securement



Specifications, descriptions and illustrative materials in this literature are as accurate as known at the time of publication, but are subject to change without notice.

© 2024 TRAMEC, LLC  
LIT-MM-05-0224