

UPPER COUPLER ASSEMBLY

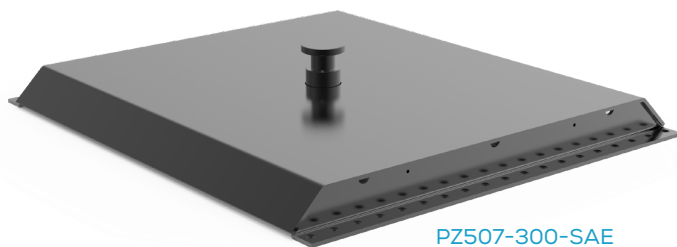
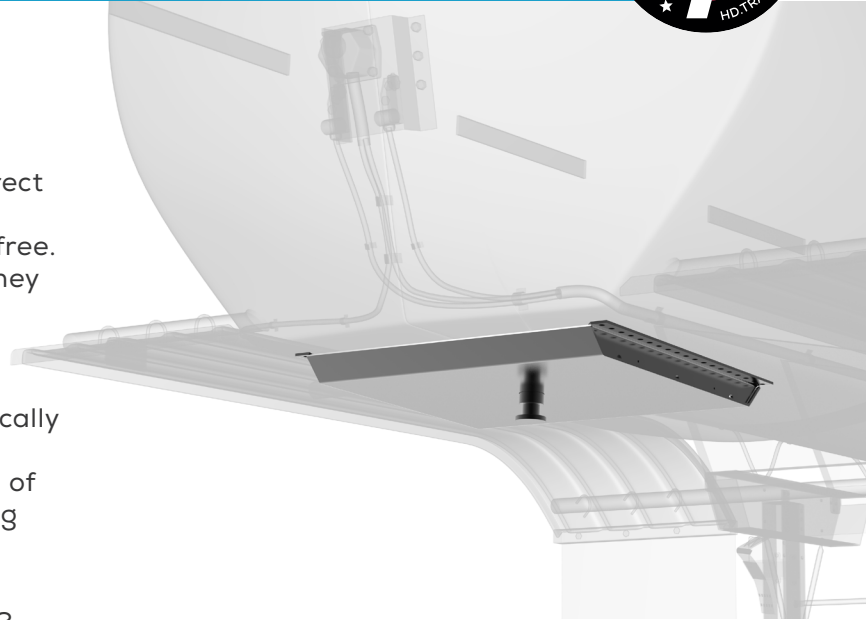
DIRECT REPLACEMENTS FOR DEPENDABLE PERFORMANCE
IN DEMANDING TANKER APPLICATIONS



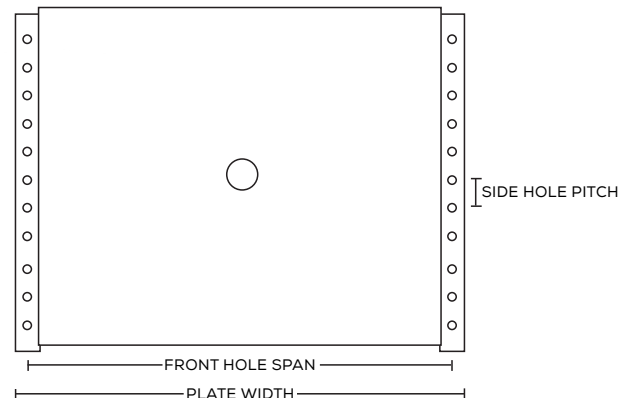
Engineered for dependable performance in demanding tanker applications, these **UPPER COUPLER ASSEMBLIES** are designed as a direct replacement for industry-standard tanker couplers—making installation fast and hassle-free. With multiple bolt pattern options available, they seamlessly match a wide range of OEM configurations, reducing downtime and simplifying fleet maintenance.

Constructed from heavy-duty steel and robotically welded for consistent strength and precision, these assemblies are built to handle the rigors of daily fleet use. Compatibility with standard king pin assemblies ensures a secure, reliable connection you can trust on the road.

These meets or exceeds SAE J700 and SAE J133 standards, delivering the performance and reliability required for demanding tanker operations.



PZ507-300-SAE



UPPER COUPLER ASSEMBLIES

P/N	FRONT HOLE SPAN	SIDE HOLE PITCH	# SIDE HOLES EACH SIDE	PLATE WIDTH	PLATE LENGTH
PZ509-40X	39"	3"	12	41.12"	39"
PZ9136-0090	40.25"	3"	11	42"	36.63"
PZ504-23-SAE	36"	2"	24	37.75"	47.25"
PZ507-300-SAE	40.63"	2"	19	42.75"	39"
PZ507-150X	40.5"	4"	10	42.19"	37.63"
PZ507-02X	41"	4"	10	42.75"	38"