

# 3/8" QUICK-FIX® KITS

THE FAST, PERMANENT SOLUTION FOR REPAIRING YOUR DAMAGED AIR BRAKE LINES



Keeping a Quick-Fix Kit on hand makes field repairs of damaged hose lines fast and easy

## FEATURES & BENEFITS

- Tramec Sloan's Hose End Repair Kits are the First & Best of Their Kind
- Each Pack Will Repair Two Damaged 3/8" Rubber Air Brake Lines
- Quick-Fix Makes Field Repairs Easy, Reducing Downtime
- Meets DOT 106 & SAE J1402 Requirements
- Clamshell Pack Features Pre-Sealed Threads & Includes an Installation Tool (5/16" Hex Key)
- Available with 3/8" or 1/2" Live Swivel Fittings
- Designed & Made in the USA!



Each Quick-Fix assembly consists of two shell halves, pre-greased barb, brass fitting, and ring to secure.

P/N	STYLE	PACKAGE
431402	3/8" NPTF Quick-Fix Kit	Clamshell
431403	1/2" NPTF Quick-Fix Kit	Clamshell
31402*	3/8" NPTF Quick-Fix Kit	Classic Tube
31403*	1/2" NPTF Quick-Fix Kit	Classic Tube
31407*	3/8" NPTF with 1/4" NPTF Adapter	Classic Tube
31408*	3/8" NPTF with 3-1/2" Spring Guard	Classic Tube
31410	Universal Kit: 3/8" NPTF with 1/4" NPTF Adapter, 1/2" NPTF Reducer, and 3/8" x 3/8" NPTF Couple	Classic Tube



**31402B:** A version of the classic Quick-Fix with a brass barb for use with a gladhand.

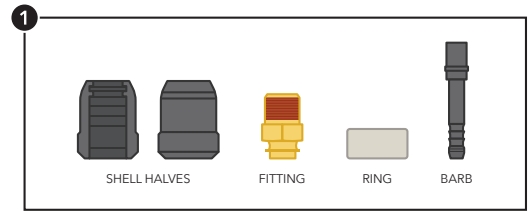
\*Add the Prefix "P" to the Part Number for Thread Sealant; Add the Suffix "B" to Specify a Brass Barb for Gladhands

# 3/8" QUICK-FIX® KITS

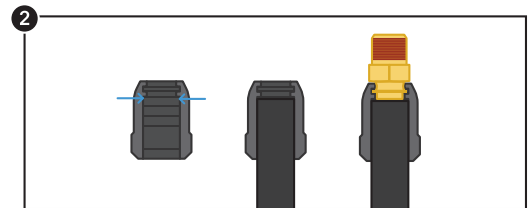
## QUICK-FIX® RETAIL DISPLAYS



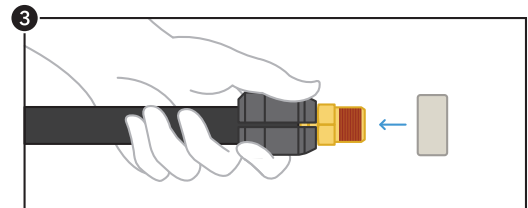
P/N	DESCRIPTION
31402POP	Countertop POP Display with 15 Tubes (P/N 31402)
431405D	Countertop Display Rack without Stock
431405	Countertop Display Rack with 12 of Clamshell Kit 431402
431406	Countertop Display Rack with 12 of Clamshell Kit 431403
431402-12	Display Rack Refill: 12 of Kit Clamshell 431402
431403-12	Display Rack Refill: 12 of Kit Clamshell 431403



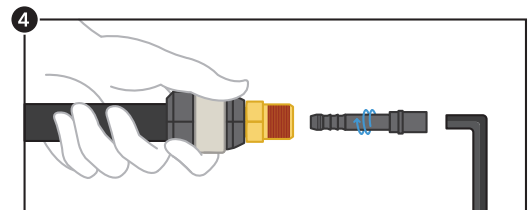
**STEP ONE:** Disassemble the Quick-Fix Kit



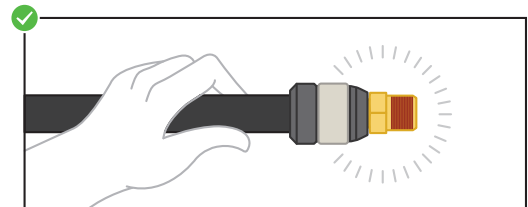
**STEP TWO:** Place trimmed hose end flush against the groove inside one shell half (see arrows) then insert fitting into lock groove



**STEP THREE:** Place the other shell half over the hose and fitting. Holding shells steady, slide the ring over, pushing and turning until in place.



**STEP FOUR:** Insert barb into fitting, pushing and turning to start the threads. Using a 5/16" hex key, continue to push and turn barb. **NOTE:** Do not use pneumatic or electrically assisted drivers for installation.



**DONE!** Once the barb is flush inside the fitting, your newly repaired hose end is complete. **NOTE:** Check to ensure the hose has not shifted during assembly.