

FLEET ENGINEERS

1800 EAST KEATING AVENUE
MUSKEGON, MI 49442
PH: 1-800-333-7890 • F: 231-777-2720

Installation Sheet #INS-03030

Spray Master® FRX-19 & FRX-22 with SlideTrax Installation Instructions

Patent 7384071

NOTE:

These instructions for installing Spray Master® with SlideTrax® fenders are intended to be a general guide to help the installer. Because of the large number of possible mounting configurations, the installer is responsible for the installation design and for providing adequate clearance around the tire carrier (i.e. tire clearance, trailer clearance, etc.). These products may not fit all truck models or types of suspensions. Check truck or trailer manufacturer for suspension travel specifications. Modifications to the brackets and/or the fenders may be required. Any modifications are at the discretion, responsibility and risk of the installer.

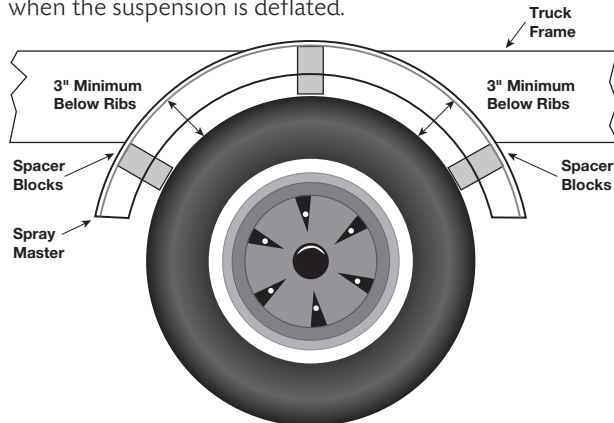


Step 1

Position fender over tires. Use a 2"x4" block or other suitable spacer to achieve desired clearance around tires. S.A.E. recommendation is 3" minimum (below the ribs).

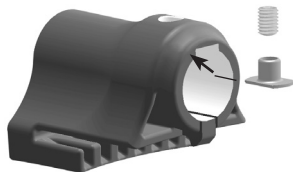
NOTE:

If you have an air suspension make sure there is tire clearance when the suspension is deflated.



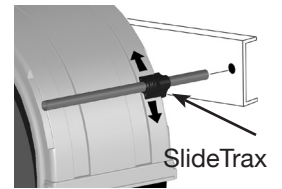
Step 2

Assemble the SlideTrax® clamps by inserting the threaded T-nuts into the clamps from the inside and pushing them into place.



Step 3

Insert a mounting tube through a SlideTrax® clamp to use as a guide. On the frame side of the fender, position the clamp (with tube) on the SlideTrax®. Move the clamp on the SlideTrax® as necessary to select an existing hole or mark a space on the frame to drill a new hole.



NOTE: Be sure to follow truck or trailer manufacturers recommended procedures for drilling any required holes in the frame.

Step 4

Once the position of the mounting tube is chosen, slide the other SlideTrax® clamp onto the tube, making sure that they are square to the truck frame, then mark the positions of the clamps on the fender.



Step 5

Repeat step 3 and 4 for the other mount.

Step 6

Remove the fender from over the tire and place the SlideTrax® clamps on the fender at the marked positions. Engage the SlideTrax® teeth and firmly push clamps onto the fender until they snap into place. Once in place, rap with a soft hammer to seat the clamp into the SlideTrax®.



NOTE: If clamp removal or reposition is necessary, an outward rap with a soft hammer will disengage it.

Step 7

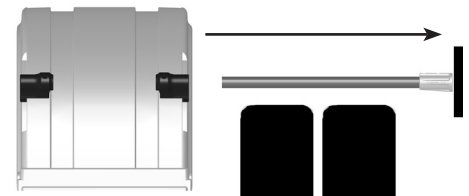
Mount the mounting tubes to the truck frame according to the instructions provided with the mounts.

NOTE: It may be easier to leave the bolts loose enough to allow some movement until the final positioning of the fender.

Step 8

Slide the fender with attached SlideTrax® clamps on to the mounting tubes already attached to the frame.

Slide onto mounting tube



Step 9

Position the fender over the tires and secure in place by tightening all bolts to the proper torque and installing the set screws in the SlideTrax® clamps and tightening to maximum torque of 48 in. lbs. +/- 3in. lbs. or 4 ft. lbs.

CAUTION: Do not over tighten.

NOTE:

Flap weights are **not** recommended and may void the warranty. Painting Spray Master® fenders **IS NOT** recommended and may void the warranty. If painting is desired, a Flex Agent **MUST** be added to the paint!

