



TRAMEC SLOAN®
FLEET ENGINEERS DIVISION

MUD FLAPS & ACCESSORIES



KEEP YOUR VEHICLES CLEANER AND THE ROADS SAFER

With Mud Flaps & Mounting Brackets from
Our Fleet Engineers Division

MUD FLAPS

Formulated and blended with a unique compound of polymers for greater resistance to cold weather cracking and tearing. Our mud flaps are made in the USA from recyclable materials and are resistant to road chemicals, grease, oil, fuel and salt.



- **AeroFlap®** AERODYNAMIC MUD FLAPS
- TRADITIONAL POLY MUD FLAPS

MUD FLAP BRACKETS

A full line of mud flap mounting brackets including the popular HELLCAT & FB-27 Spring Loaded bracket and the standard bar type bracket.

- **Hellcat®** SPRING LOADED MUD FLAP BRACKETS
- **FB-27** SPRING LOADED MUD FLAP BRACKETS
- BAR STYLE MUD FLAP BRACKETS

CONSPICUITY

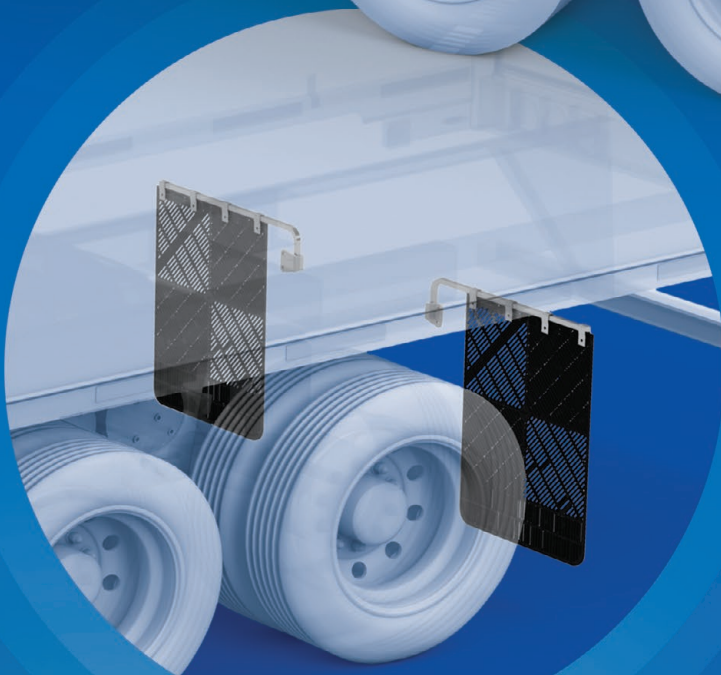
From plates to tape to reflectors, we have a wide assortment of products that meet or exceed the requirements of the DOT-2 Conspicuity law.

FLAP ACCESSORIES

Dress-up your mud flaps and make them work and look even better with our flap accessories, such as anti-sail brackets, mounting angles and more...



Spring Loaded
Flap Brackets

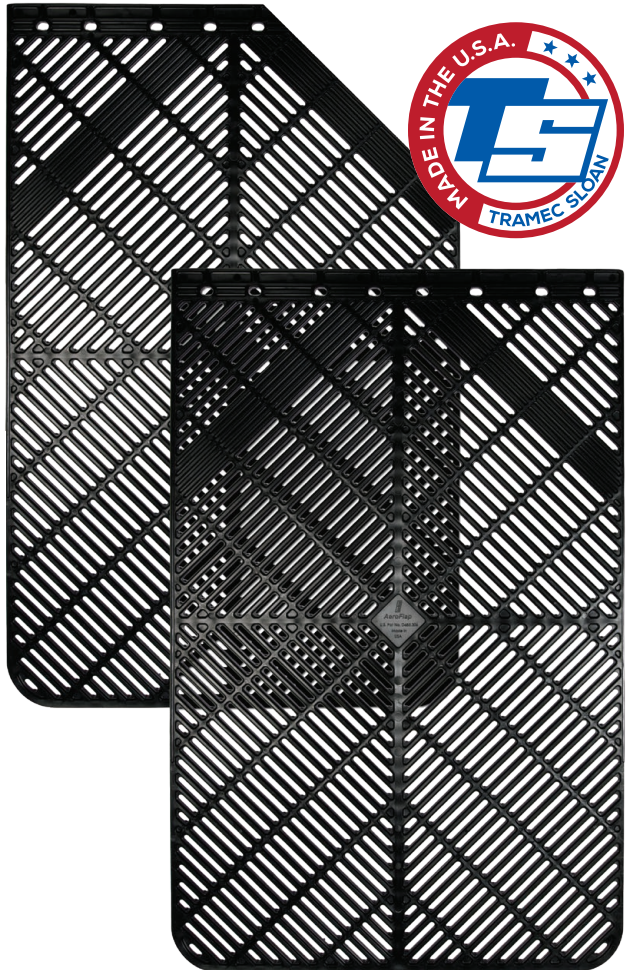
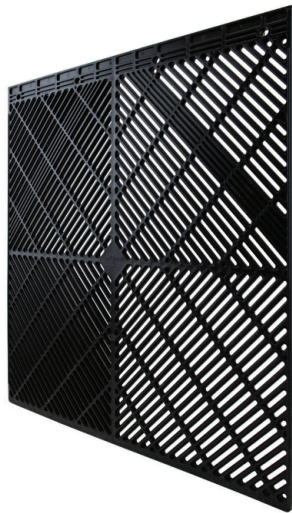


**CONTACT US TODAY
TO LEARN MORE!**

800.333.7890
FLEETENGINEERS.COM

When the safety and efficiency of your operation is at stake, more fleet operators trust **AeroFlap**, the engineered solution from the Fleet Engineers Division at Tramec Sloan.

- DESIGNED TO IMPROVE FUEL-EFFICIENCY, the innovative design breaks up the trailing air vortex to reduce vehicle drag
- REDUCES SPRAY, creating safer environment on the road for nearby traffic
- ELIMINATES NEED for anti-sail brackets
- OPEN DESIGN vents excess heat away from wheels & braking systems, which reduces maintenance costs
- VARIOUS LENGTHS with straight or angled top edges for ultimate compatibility
- MADE IN THE USA!



POLY MUD FLAPS & BAR FLAP BRACKETS

POLY MUD FLAPS

- REDUCES ROAD SPRAY with the ribbed pattern on the anti-spray version that channels water downward
- MULTIPLE SIZES, COLORS. 3/16" or 5/16" thickness in black or white and three lengths: 24", 30" or 36"
- AMERICAN MADE, high-quality product



BAR STYLE FLAP BRACKETS

- CONSISTENT HIGH QUALITY MATERIALS – SAE 1080 Spring Steel tooled to bend to a true 90-degree angle and E-Coated to withstand a 500 hour salt spray. **Made in the USA!**
- UNMATCHED PERFORMANCE – Double swaged end prevents bouncing and vibration keeping the bracket hanging at a perfect 90-degree angle behind the tire.
- CAST MOUNTS – One-Piece, Cast Mounts are made of tough high-impact steel which provides maximum strength and longer life. Available in standard, end, narrow or vertical cast mounts.



STANDARD MOUNT



END MOUNT

Bar Brackets that hang at a true 90° behind the tire unlike many others



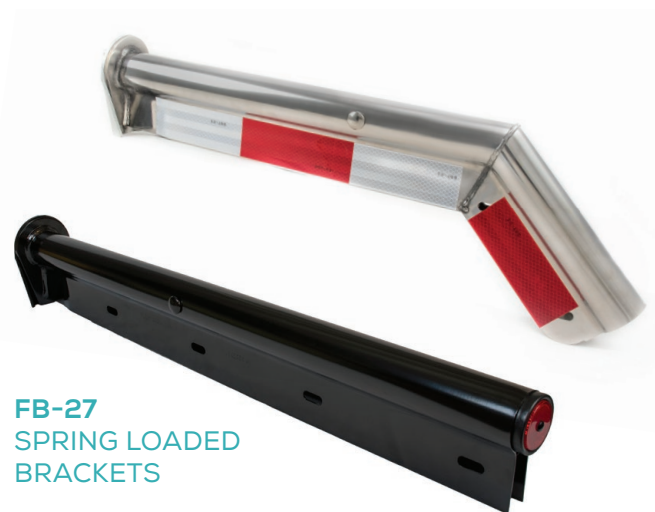
SPRING LOADED MUDFLAP BRACKETS

Patented self-centering frame seats that work 100% of the time.

- **SELF-CENTERING FRAME SEAT** allows the bracket to pivot 180° to spring back to the correct position every time and protects the truck frame with no contact from the tube to the frame
- **SLOT ARRANGEMENT CONFORMS** to TTMA flap hole pattern for straight brackets
- **IDEAL** for heavy-duty spray suppression flaps
- **FINISHED APPEARANCE** with reflector or metal end caps that stay in place and keep debris outside of the tube
- **STRAIGHT OR SHORTIE** brackets available
- **AVAILABLE IN** black E-Coat or polished stainless steel finish
- **HELLCAT®** Mud Flap Brackets come with reflectors that are cradled in the tracks and less likely to be damaged by routine or incidental contact; meets DOT requirements
- **FB-27** Mud Flap Brackets are available with or without reflective tape that meets DOT-C2 requirements
- **MADE IN THE USA!**



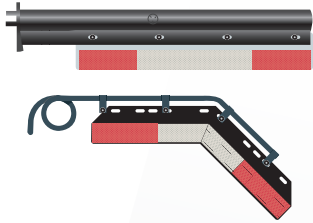
HELLCAT®
SPRING LOADED
BRACKETS



FB-27
SPRING LOADED
BRACKETS

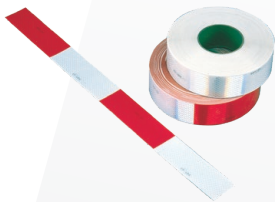


CONSPICUITY & FLAP ACCESSORIES...



UNIVERSAL CONSPICUITY PLATES

Easily add DOT approved reflective tape to mud flaps with our aluminum universal conspicuity plate. Reflective tape attached and available in straight or shortie (angled) for roadside or curbside applications. *Brackets sold separately.*



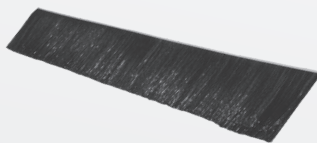
DOT-C2 REFLECTIVE TAPE

Designed for use on trucks and trailers to provide a clear warning to oncoming motorists. This tape is DOT-C2 certified, exceeds NHTSA requirements and highly reflective, even up to a 90-degree angle.



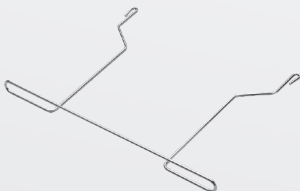
FB-27 REMOVABLE ADAPTER

Detachable bracket design allows for easy removal of FB-27 Spring Loaded Mud Flap Brackets. Black primed cast mount made of high-impact steel.



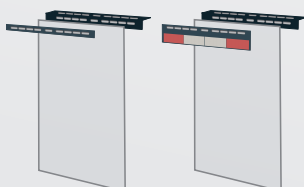
BRUSH SKIRTING

Keeps spray off the sides of your trailer and significantly reduces spray to improve visibility for both driver and motorist. Flexible filament skirting won't trap hot air or interfere with tires.



ANTI-SAIL BRACKETS

Improves the performance of your mud flaps by keeping them stabilized. Steel construction with numerous finish options.



MOUNTING ANGLE AND RETAINING STRAP FOR FLAPS

Used to attached mud flaps to fenders or trailers and prevent tear out of mud flap holes. Constructed with .12" thick steel, E-Coat finish and available with or without reflective tape.

TRAMEC SLOAN and **FLEET ENGINEERS** have been designing and manufacturing products for the Heavy Duty Vehicle Industry for over 55 years.

We strive to provide quality products with great service at an exceptional value for our customers.

CUSTOMER SERVICE:

800.333.7890

csrs@tramecsloan.com

ONLINE:

tramecsloan.com

fleetengineers.com

**ALSO FROM TRAMEC SLOAN & OUR
FLEET ENGINEERS DIVISION:**

-  Air Brake Products
-  Electrical Products
-  Fittings & Fasteners
-  Door Systems
-  Cargo Control
-  Parts & Accessories



Specifications, descriptions and illustrative materials in this literature are as accurate as known at the time of publication, but are subject to change without notice. Hellcat® and AeroFlap® are registered trademarks of Tramec Sloan.

© 2022 TRAMEC SLOAN
LIT-50105-0322