

FLEET ENGINEERS has been designing and manufacturing products for the Heavy Duty vehicle industry for over 60 years. Fleet Engineers is part of the **Tramec** family along with Tramec Sloan and Penz Products.

We strive to provide quality products with great service at an exceptional value for our customers.

CUSTOMER SERVICE:

800.336.7778

customerservice@tramec.com

ONLINE:

hd.tramec.com

ALSO FROM TRAMEC'S HD BRANDS:

- Air Brake Products
- Electrical Products
- Fittings & Fasteners
- Door Systems
- Cargo Control
- Container Securement



Specifications, descriptions and illustrative materials in this literature are as accurate as known at the time of publication, but are subject to change without notice.

© 2024 TRAMEC, LLC
LIT-50402-824



QUARTER FENDERS



QUARTER FENDER SOLUTIONS

Fleet Engineers has been designing and perfecting quarter fenders for over 40 years. Today, Fleet Engineers offers one of the most extensive quarter fender lines in the market. From advanced aerodynamic designs to basic cross-tube designs, Fleet Engineers is the leader in both metal and plastic quarter fenders.

- Radius Edges Reduce Road Spray and Enhance Aesthetics
- Aerodynamically Enhanced Versions for Optimal Performance
- Flattened Cross-Tube and Backing Plates Hold Up to Road Vibration with Secured Tightening
- Advanced Corrosion Resistance and Heavy Duty Performance with Stainless Steel Versions
- Standard and Low Mount Styles



VIDEO! WATCH OUR VIDEO!
Compare the advantage of our Quarter Fenders. Visit our video page on hd.tramec.com to check it out!



Discover the Style & Performance with Three Styles for Versatility & Optimal Spray Control.

AeroSlipper™ AeroSlipper Aerodynamic Design

Designed with a short support tube for superior aerodynamic performance, the reinforced support tube minimizes drag and also reduces the amount of dirt and debris that collect against the crossbar. AeroSlipper is the Fleet Manager's choice for efficient operation and clean appearance.



ASP-25
Black* Poly



ASC-24
Stainless 18
Gauge Steel



22.5" / 24.5"
Wheel Size



ASP-25

XT-Series Cross-Tube Mount Series

Full length fender mount solution with configuration options in both standard and low mount. Uniquely designed with a flattened Cross-Tube and backing plate to ensure a snug and secure fit to reduce road vibration.



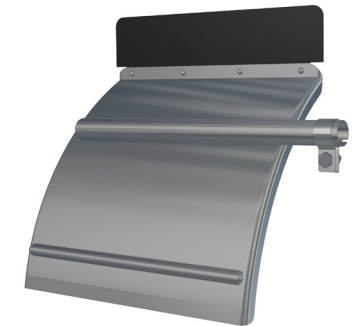
XTP-24 / XTPL-24
Black* Poly



XTC-24 / XTCL-24
Stainless 18
Gauge Steel



22.5" / 24.5"
Wheel Size



XTC-24

PM-Series Paddle Mount Series

Desired for their attractive appearance and optimized functionality. Fleet Engineer's Paddle Mounts have a full length cosmetically designed triangle cross bar with hidden mounting bolts to create a clean uncluttered appearance.



PMC-24 / PMCL-24
Stainless 18
Gauge Steel



22.5" / 24.5"
Wheel Size



PMC-24

* Custom poly colors available upon request

DON'T FORGET YOUR MOUNTING HARDWARE

QuickPicks Mounting Hardware

Every Fleet Engineers Quarter Fender is available with a complete set of mounting hardware, we call them "Quick Picks." Simply select Standard Side Mount Socket or Premium Cast Steel Post Mount Socket and get complete kits with every washer, nut, bolt and bar delivered to fit your fender, your vehicle.



Standard
Side Mount Socket



Premium
Cast Steel Post
Mount Socket