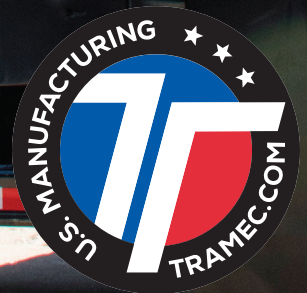


FLEET ENGINEERS[®]

A TRAMEC COMPANY

DOOR SYSTEMS



When you choose a Door System from Fleet Engineers, you can be confident it has been engineered to serve your needs!

From installation-optimized, OEM-designed systems to the most complete line of hardware and replacement parts in the industry, Fleet Engineers is the new benchmark for quality and progressive door solutions.

- ▄ **PrecisionTrak™** TRANSPORTATION-GRADE WOOD PANELS
- ▄ **ToughTrak®** HEAVY-DUTY STEEL-CLAD PANELS
- ▄ **SWING DOOR SOLUTIONS**





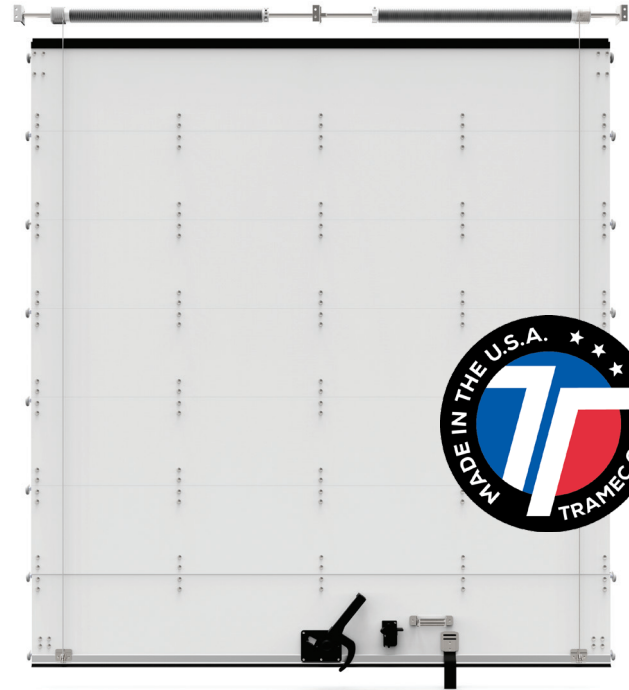
Everything we do is engineered to last –
*and that includes our complete line
of roll-up & swing door hardware.*

CONTACT US TODAY TO LEARN MORE!
800.336.7778 | HD.TRAMEC.COM



From start to finish, the high standards for our **PrecisionTrak** Wood Roll-Up Doors are what set them apart from the competition.

- Available in Flush-Mount Hinge with 2" Rollers OR Recessed Hinge with 1" Rollers
- Manufactured with 3/4", 7-ply, Transportation Grade, Hardwood Faced Plywood
- Universal Trim-to-Fit or Custom Sizes Fully Assembled and Ready to Install
- Primed and Ready-to-Paint or Pre-Painted with a Durable Clear UV Finish
- Industry Standard Hardware
- 7" x 19" Stainless Steel Cables
- Zinc or Stainless Steel Rivets
- Other options or configurations are available upon request

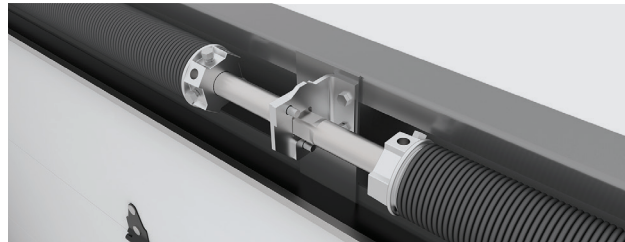
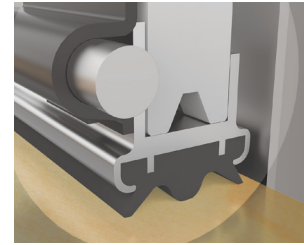


Our **PrecisionTrak** doors are the ideal budget-friendly replacement solution.



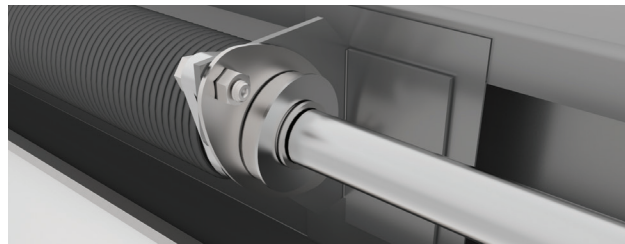
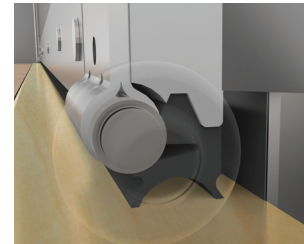
FLUSH-MOUNT 2" ROLLER WOOD ROLL-UP DOOR

- End hinges with removable cover significantly speeds up installation and roller replacement
- 2" Roller has a large bearing surface for smooth operation
- Flexible four point bottom seal provides a weather-tight joint to protect cargo from dirt and moisture
- Header-mounted dual-spring counter balance for maximum performance
- E-coated hardware provides excellent corrosion resistance

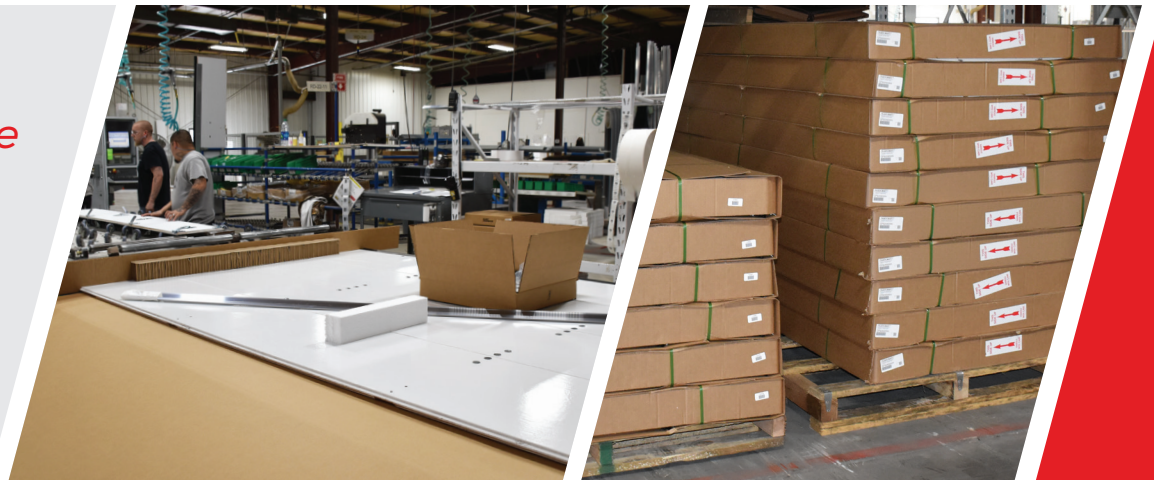


RECESSED-MOUNT 1" ROLLER WOOD ROLL-UP DOOR

- Recessed end hinges prevent freight hang-up and door damage while providing excellent roller shaft securement
- Flexible two point bottom seal provides a weather-tight joint to protect cargo from dirt and moisture
- Single-spring counter balance allows for quick, easy adjustments
- Cast aluminum cable drums for long-lasting operation
- Corrosion resistant galvanized hardware



*Damage-Free Shipments with the **BEST** packaging in the industry.*



STANDS UP TO A BEATING

These composite doors are the most durable you'll find on the market today with features that take on salted winter roads and the hottest summer days.

- ! ToughTrak® doors are designed & manufactured to stand up to impact without deformation
- ! Panels are abrasion resistant with an excellent performance-to-weight ratio
- ! Even the hardware is tough - an extra row of heavy-duty, reinforced, dual-coated (E-coat & powdercoat) hinges that resist corrosion
- ! Automotive-grade finish looks good and allows for easy clean-up
- ! Uses standard flush-mount hinges with 2" rollers



If your roll-up door needs to withstand a beating, it's time to get a **ToughTrak**.



SWING DOOR SOLUTIONS

With over 1,000 high quality components from hinges to lock rods to hold-backs, Fleet Engineers swing door product offering is one of the largest in the industry.

You can be confident that each high quality, durable component is engineered to last. Fully assembled swing doors are available with your vendor-supplied blanks.

- // SWING DOOR HINGES
- // HINGE PINS & BUTTS
- // HOLD-BACKS
- // HANDLES
- // LOCKRODS & COMPONENTS
- // BUMPERS
- // LOUVERED VENTS
- // DRY FREIGHT VENT DOORS

Fleet Engineers offers the best OEM swing door parts selection! For our complete swing door hardware selection visit us online.

HD.TRAMEC.COM



FLEET ENGINEERS has been designing and manufacturing products for the Heavy Duty vehicle industry for over 60 years. Fleet Engineers is part of the **Tramec** family along with Tramec Sloan and Penz Products.

We strive to provide quality products with great service at an exceptional value for our customers.

CUSTOMER SERVICE:

800.336.7778

customerservice@tramec.com

ONLINE:

hd.tramec.com

ALSO FROM TRAMEC'S HD BRANDS:

- ▄ Air Brake Products
- ▄ Electrical Products
- ▄ Fittings & Fasteners
- ▄ Door Systems
- ▄ Cargo Control
- ▄ Container Securement



Specifications, descriptions and illustrative materials in this literature are as accurate as known at the time of publication, but are subject to change without notice. ToughTrak® is a registered trademark of Tramec, LLC.

© 2023 TRAMEC, LLC
LIT-50201-0320