

# ABS SENSOR LOCK

THE SECURE, RELIABLE, AND CONVENIENT EXTENSION LOCK PROVIDES PEACE OF MIND



Tramec Sloan's teathered ABS Sensor Lock firmly secures the extension cable to the ABS sensor, ensuring a dependable and uninterrupted connection. Engineered with precision, it eliminates the risk of loose connections that could lead to sensor malfunctions or operational interruptions, providing peace of mind on the road.

## SIMPLIFIES MAINTENANCE & TROUBLESHOOTING

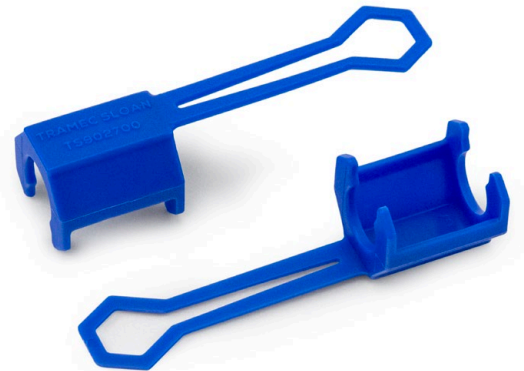
The extension lock is especially useful when multiple extension cables are connected, allowing for easy identification of the connection points. This feature makes routine maintenance, troubleshooting, and sensor diagnostics faster and more efficient, reducing downtime and keeping your systems running smoothly.

## UNIVERSAL FIT FOR VERSATILE COMPATIBILITY

Designed to offer a universal fit, this extension lock is compatible with a wide range of ABS sensor configurations. Whether you're dealing with standard or complex setups, it seamlessly integrates into your system, providing flexibility and ease of use across different vehicle models.

## SECURE & HASSLE-FREE OPERATION

Say goodbye to frustrating disconnections. With this extension lock, you can count on a stable and secure connection that enhances the overall reliability of your ABS sensors. It's a solution built for convenience, making your sensor installation and maintenance processes effortless and stress-free.



P/N	DESCRIPTION	PKG QTY
TS902700	ABS Sensor Lock	10